

Retrieving the COM Class Factory failed message

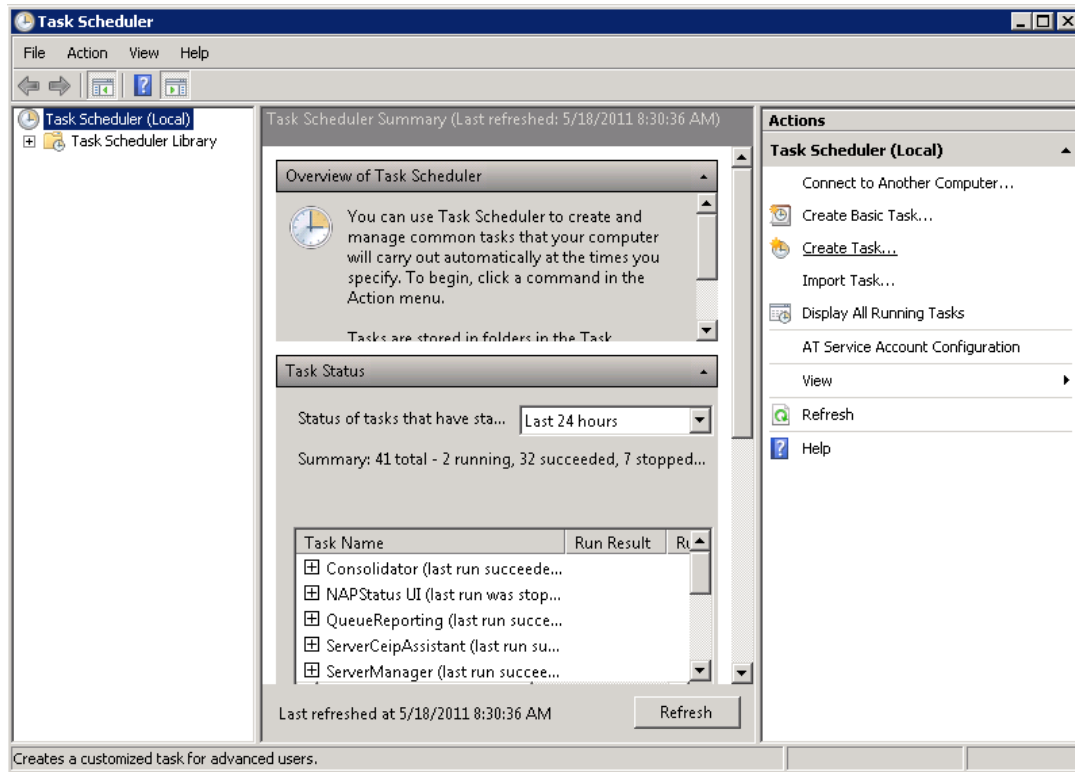
This is related to a Microsoft issue with amount of data going through SSRS. The error is below in a screenshot.

Error Message	Retrieving the COM class factory for component with CLSID {A8F03BE3-EDB7-4972-821F-AF6F8EA34884} failed due to the following error: 800703fa.
Method	.cctor
Class	System.Management.MTAHelper
Stack Trace	<pre> System.Web.HttpUnhandledException: Exception of type 'System.Web.HttpUnhandledException' was thrown. ---> System.TypeInitializationException: The type initializer for 'System.Management.MTAHelper' threw an exception. ---> System.Runtime.InteropServices.COMException (0x800703FA): Retrieving the COM class factory for component with CLSID {A8F03BE3-EDB7-4972-821F-AF6F8EA34884} failed due to the following error: 800703fa. at System.Management.MTAHelper..cctor() --- End of inner exception stack trace --- at Microsoft.SqlServer.ReportingServices2005.Execution.RSExecutionConnection.GetSecureMethods() at Microsoft.SqlServer.ReportingServices2005.Execution.RSExecutionConnection.IsSecureMethod(String methodname) at Microsoft.SqlServer.ReportingServices2005.Execution.RSExecutionConnection.LoadReport(String Report, String HistoryID) at Microsoft.Reporting.WebForms.ServerReport.GetExecutionInfo() at Microsoft.Reporting.WebForms.ServerReport.SetParameters(IEnumerable`1 parameters) at NWS.Logos.Suite.SQLReportViewer.Page_Load(Object sender, EventArgs e) at System.Web.UI.Control.OnLoad(EventArgs e) at System.Web.UI.Control.LoadRecursive() </pre>

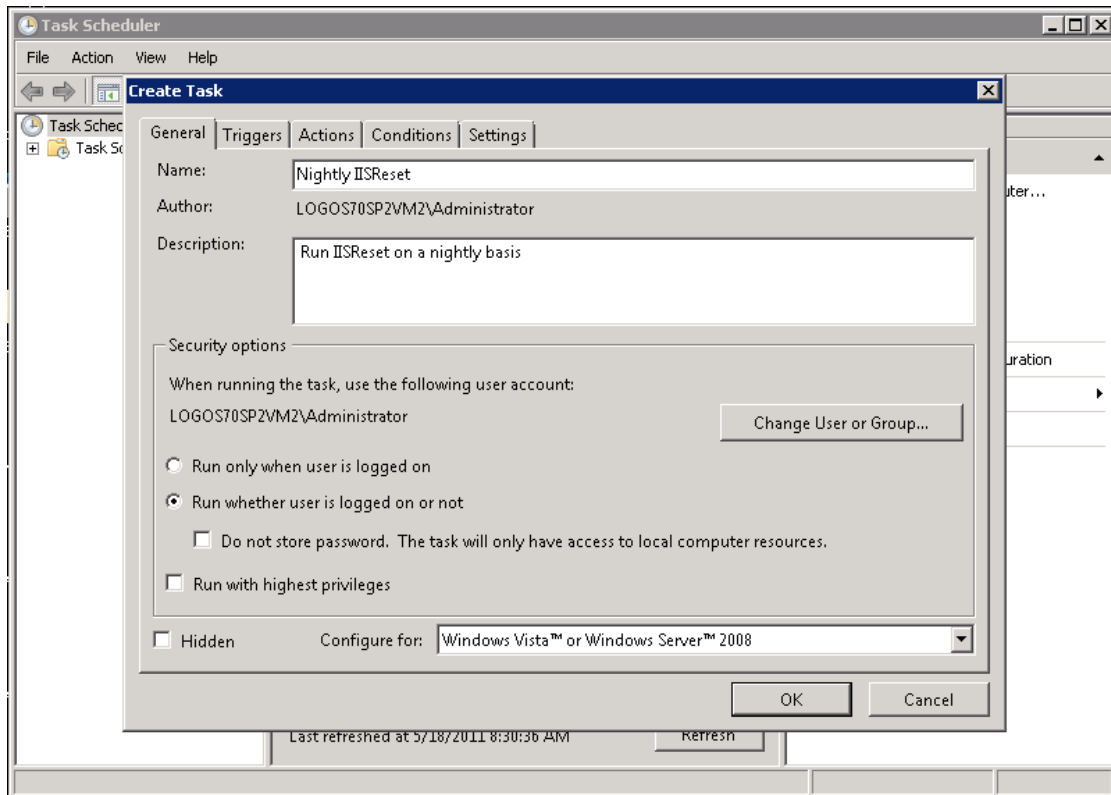
To resolve this issue, an IISReset command needs to occur on the Application Server that will cause all users to be logged off of the environment. For a long term fix, we can schedule an IISReset nightly on the Application Server using the below embedded document.

Configuring IIS for a nightly reset

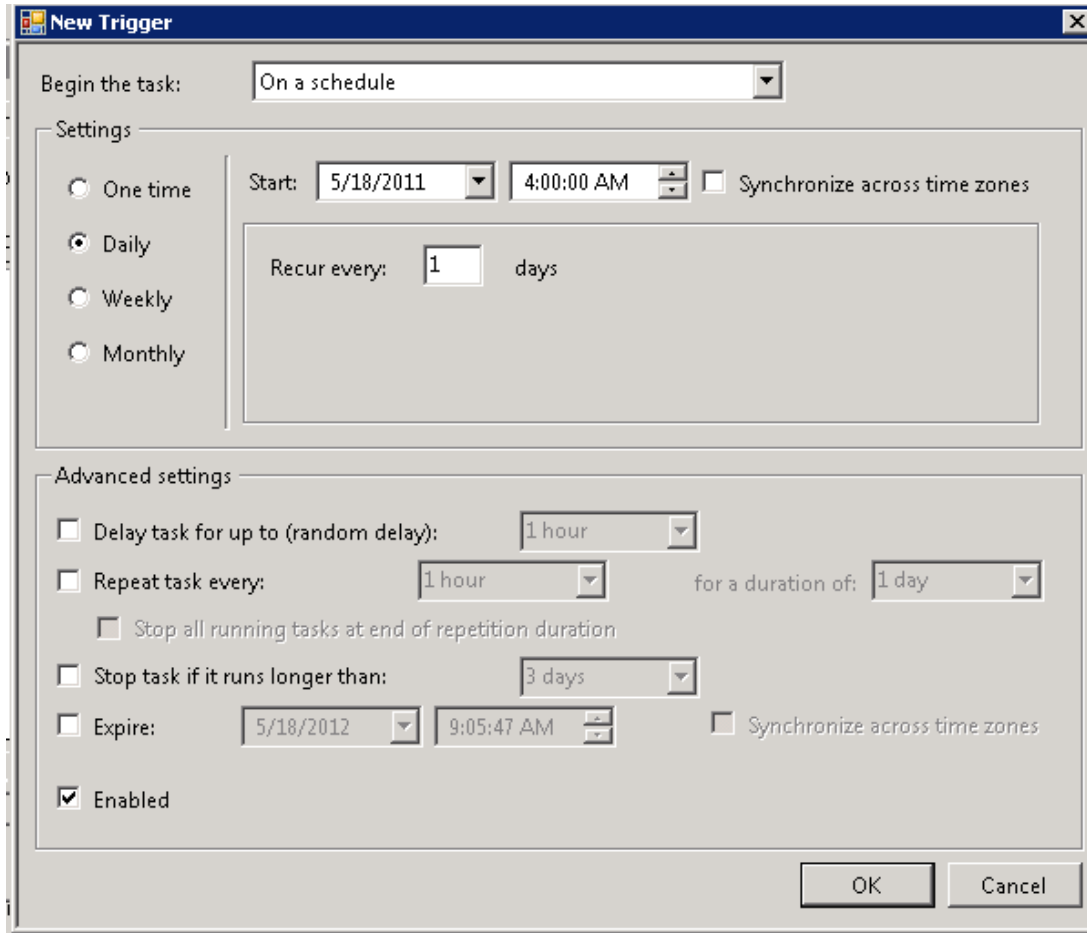
Please log into the server as an administrator. In the start menu search type Task Scheduler.



Click **Create Task**.



Configure the task like the above. Click the **Triggers** tab. Click **New**.



New Trigger

Begin the task: On a schedule

Settings

☐ One time
☒ Daily
☐ Weekly
☐ Monthly

Start: 5/18/2011 4:00:00 AM ☐ Synchronize across time zones

Recur every: 1 days

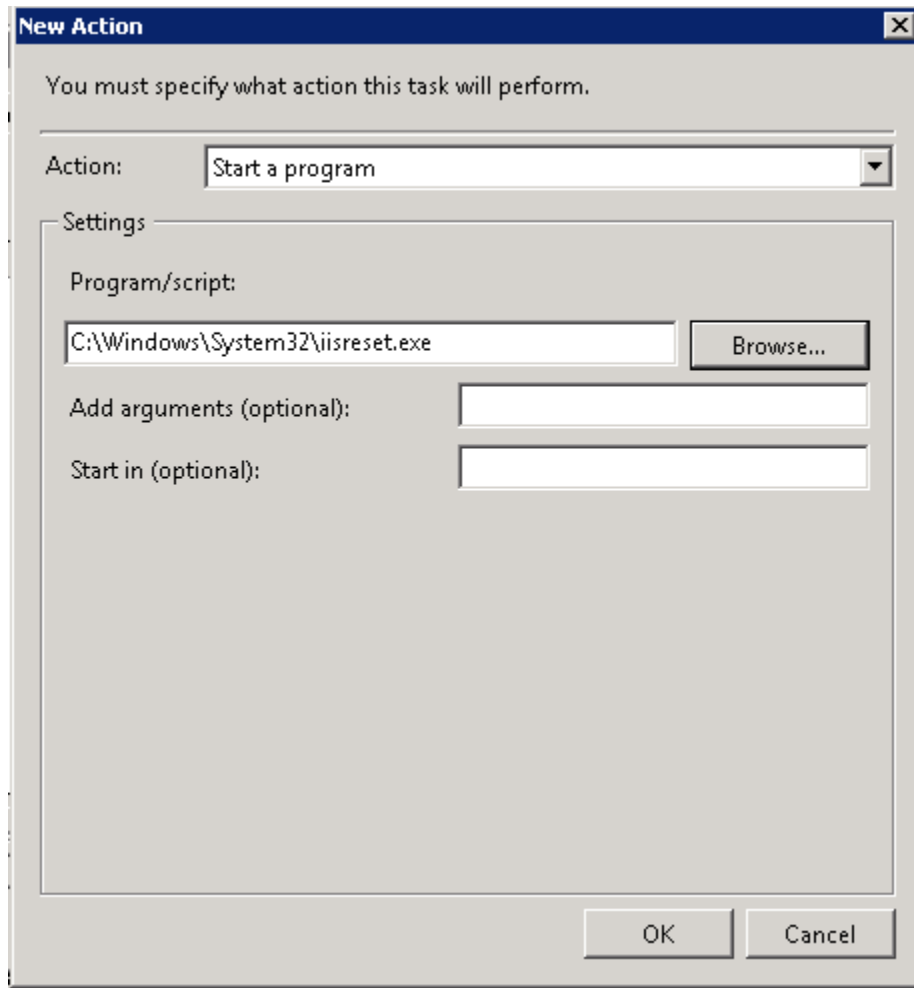
Advanced settings

☐ Delay task for up to (random delay): 1 hour
☐ Repeat task every: 1 hour for a duration of: 1 day
☐ Stop all running tasks at end of repetition duration
☐ Stop task if it runs longer than: 3 days
☐ Expire: 5/18/2012 9:05:47 AM ☐ Synchronize across time zones
☒ Enabled

OK Cancel

Configure the task to run daily, after the restart of the Logos Management Console. Four o'clock a.m. should be a good time for this.

Click **OK**. Click the **Action** tab and click **New**.



Configure the Action to start the IISReset Program. Click **OK**. The task is now set up to run nightly.